



KANSAS GEOLOGICAL SOCIETY

# BULLETIN

Volume 98 Number 3

May - June 2023

Established 1925

## IN THIS ISSUE

KGF/KGS 26th Annual Mixer

Thursday, May 25

4:00 - 8:00 PM

Central Standard Brewing



**Your 1/8 page ad here**

**Use Your KGS Library  
For All Your Printing Needs**

Old photos?  
Old documents?

**We can scan them for you!**

**Robert F. Walters Digital Library**

**The most complete source for Kansas data**

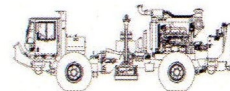
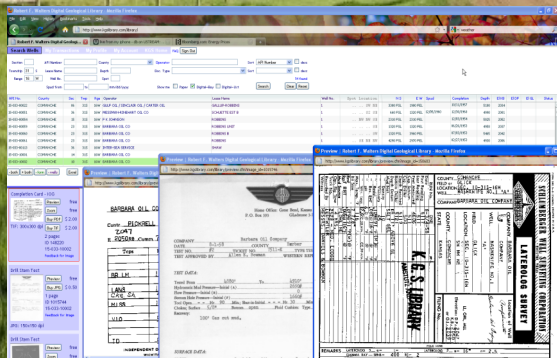
**Database updated nightly**

Day or Night

You can get to the data as you need it

**[www.kgslibrary.com](http://www.kgslibrary.com)**

**To Join: call 316-265-8676**



**Proudly Celebrating 25+ Years  
Acquiring Seismic Data Throughout the  
Continental United States**

**WICHITA**

Nicolle Jausel  
(316) 636-5552  
Nicolle@paragongeo.com

**DENVER**

Kim Nordberg  
(303) 888-8885  
Knordberg@paragongeo.com

**HOUSTON**

Brent Propst  
(832) 643-5158  
Bpropst@paragongeo.com

**OKLAHOMA CITY**

Joe Broussard  
(405) 213-9859  
Jbroussard@paragongeo.com

**website: [www.paragongeo.com](http://www.paragongeo.com)**

**We Invite You**

**To join the**

***Kansas Geological  
Foundation***

***\$50.00 membership is  
tax deductible***

***Call 316-265-8676***

***Or send checks to:***

***Kansas Geological Foundation***

***1704 S. Baehr***

***Wichita, KS 67209***

# Table of Contents

---

## Features:

<b>KGS Events: <i>KGF - KGS Spring Mixer</i></b>	<b>9</b>
--	----------

## Departments & Columns:

<b>KGS Tech Talks</b>	<b>4</b>
<b>Advertiser's Directory</b>	<b>7</b>
<b>In Memoriam</b>	<b>12</b>
<b>Professional Directory</b>	<b>13</b>
<b>Kansas Geological Foundation Cornerstone and KGF News</b>	<b>20-23</b>
<b>Kansas Geological Foundation Memorials</b>	<b>24-26</b>
<b>Exploration Hilights     by John Morrison - IOG</b>	<b>28-29</b>

## ON THE COVER:

**Wineglass Canyon  
Death Valley, CA  
Active Tectonic Exposure**

**Photo by Marli Miller**

The Kansas Geological Society Bulletin, which is published bimonthly in electronic format, seeks short papers dealing with any aspect of Kansas geology, including petroleum geology, studies of producing oil or gas fields, and outcrop or conceptual studies. Maximum length of papers is 6 pages as they appear in the Bulletin, including text, references, figures and/or tables, and figure/table captions. Inquiries regarding manuscripts should be sent to [manager@kgslibrary.com](mailto:manager@kgslibrary.com) or mailed to 1704 S. Baehr, Wichita, KS 67209. Specific guidelines for manuscript submission appear in each issue of the Bulletin, which can also be accessed on-line at the Kansas Geological Society web site at <http://www.kgslibrary.com>



# SOCIETY Technical Meetings

**All Technical Meetings will be on Zoom**

May 10, 2023	Ryan Hoffman & Corri Rees - Kansas Corporation Commission - Abandoned Well Discussion
May 24, 2023	Bob Hemmann - Geologist, Doe Run - <i>"Mining in the St Francis Mountains, MO"</i>
June 14, 2023	Dr. Stephen Oborny - Kansas Geological Survey - TBA

*Note: For those geologists who need 30 professional development hours (pdh) to renew their licenses, there will be a sign-in sheet at each presentation and also a certificate of attendance.*

Please remember to check the website for the most up to date information on Technical Talks

*<http://www.kgslibrary.com/techtalks.cfm>*



*The New Home of the KGS  
1704 S. Baehr*

# KANSAS GEOLOGICAL SOCIETY



## BOARD OF DIRECTORS

---

### **PRESIDENT**

Preston Doll

### **PRESIDENT-ELECT**

Doug Davis

### **SECRETARY**

Doug Louis

### **TREASURER**

Sal Mazzullo

### **DIRECTORS**

Seth Evenson  
Kimberly Black  
Roger Martin

### **ADVISORS**

Dave Goldak  
Ryan Dixon

## BULLETIN STAFF

---

### **EDITOR**

Wes Hansen (316) 772-6188

### **ADVERTISING**

Kent Scribner (316) 640-1154

### **MEMORIALS**

Wesley Hansen (316) 772-6188

### **EXPLORATION HIGHLIGHTS**

John H. Morrison, III  
Independent O&G (316) 263-8281

### **STATE SURVEY**

KS Geological Survey (785) 864-3965

### **SOCIETY NEWS**

KGS Library (316) 265-8676

### **MANAGER**

Angela Forrest (316) 265-8676

## COMMITTEE CHAIRMEN

---

### Advertising

Kent Scribner

### Advisory

### Annual Banquet

Doug Davis

### Bulletin

Wesley Hansen

### Computer Committee

Tyler Sanders

### Continuing Education

### Distinguished Awards

Brian Fisher

### Environmental

Kent Matson

### Field Trip

Jerry Honas

### Fishing Tournament

### Future Plans

Tyler Sanders

### Golf

Rusty Mourning

### Historian

### Library

Ted Jochems

### Membership

Larry Friend

### Nomenclature

John H. Morrison, III

### Picnic

Beth Isern

### Public Relations

### Shooting Tournament

Brian Fisher

### Technical Programs

Doug Davis

### Technical Committee

Ryan Dixon

### Finance Committee

Tim Hellman, Chairman

Members: Rocky Milford, Chuck Brewer, David Doyel,  
and Tom Funk

## K.G.S. LIBRARY

---

**PHONE** 316-265-8676 **FAX** 316-265-1013

email: [frontdesk@kgslibrary.com](mailto:frontdesk@kgslibrary.com) or

Web: [www.kgslibrary.com](http://www.kgslibrary.com)

## A.A.P.G. DELEGATES

---

Douglas Davis  
2025

Wesley Hansen  
2025

The KGS *Bulletin* is published bi-monthly by the Kansas Geological Society, with offices at 1704 S. Baehr, Wichita, Kansas 67209 Copyright 2022, The Kansas Geological Society. The purpose of the *Bulletin* is to keep members informed of the activities of the Society and to encourage the exchange and dissemination of technical information related to the Geological profession. Subscription to the *Bulletin* is by membership in the Kansas Geological Society. Limited permission is hereby given by the KGS to photocopy any material appearing in the KGS *BULLETIN* for the non-commercial purpose of scientific or educational advancement. The KGS, a scientific society, neither adopts nor supports positions of advocacy, we provide this and other forums for the presentation of diverse opinions and positions. Opinions presented in these publications do not reflect official positions of the Society.



### Nine Trucks Serving

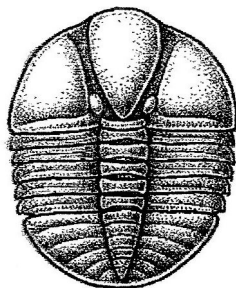
Kansas--Colorado--Texas--Nebraska--Illinois

DST's

Back Pressure testing (G1 7 G2)

Slick line services using the same Weatherford

Electronic Pressure Gauges used on DST's



1-800-728-5369

FAX 1-785-625-5620

[www.trilobitetesting.com](http://www.trilobitetesting.com)

[trilobite@eaglecom.net](mailto:trilobite@eaglecom.net)

SHOPS LOCATED IN:

Hays, KS

Scott City, KS

Pratt, KS

Oberlin, KS

## CAN YOU NAME THE CRITTER?

Sponsored by Trilobite Testing, Inc.

Is your paleo up to date?

If you know the name of the trilobite,  
submit your guess via e-mail to  
[manager@kgslibrary.com](mailto:manager@kgslibrary.com)

Remember that *Trilobite Testing* is  
sponsoring your efforts, so be sure to thank  
Paul Simpson the next time you see him.

**Bulletin committee members and PhD's in  
Paleontology are prohibited from entering.**



### ***Kansas Geological Society (KGS) Medallion for Scientific Distinction and Excellence***

The Kansas Geological Society (KGS) Medallion for Scientific Distinction and Excellence may be given annually for peer-recognized, sustained significant scientific contributions to all facets of applied Kansas geology, including work either in Kansas or in surrounding states if the latter contributions pertain directly and significantly to Kansas geology. No more than one award may be given each year, an award does not have to be given every year, and members of the KGS Awards Committee that handle nominations for this award cannot nominate themselves for this award. The candidates need not be active KGS members, and they must be living at the time of selection. The primary consideration in the selection of a candidate shall be his or her sustained, published, significant contributions to any facet of Kansas geology. Contributions may be varied in form such as development of geologic concepts, advancement in discovery thinking, and recognized leadership in exploration concepts. Oral and/or written publications in peer-reviewed geological venues is a requisite criterion for any candidate for this award. The name of a candidate shall be presented by the Awards Committee to the KGS Board of Directors for their approval. Once approved, the recipient shall be presented an appropriate award in the form of a medallion or plaque recommended by the Awards Committee and approved by the Board of Directors at the annual business meeting of the society. This is a new award given by the KGS for distinction and achievement in Geological research in Kansas.

Awards Committee members are Sal Mazzullo, Mike Dealy and Alfred James.

## AAPG IMAGE and Section Meetings

Southwest Section Meeting May 6, 2023

Wichita Falls, TX

URTeC 2023 June 13, 2023 Denver, CO

IMAGE August 27, 2023 Houston, TX

Mid-Continent Section Meeting October 7, 2023

Oklahoma City, OK

## ADVERTISER'S DIRECTORY

Duke Drilling	<i>page</i> 23
Kansas Geological Foundation	16
Murfin Drilling Company, Inc	23
PARAGON Geophysical Services, Inc	2
Professional Directory	13
Trilobite Testing	6
Walters Digital Library	2

Log in to

Walters Digital Library At

[www.kgslibrary.com](http://www.kgslibrary.com)

Log in as our guest

and see the Society's Database

A convenient way to see what you might want to  
order!

Call or email your order to:

316-265-8676

[frontdesk@kgslibrary.com](mailto:frontdesk@kgslibrary.com)

### ADVERTISER'S RATES: 2022

Full Page	B&W	Color
6 issues	\$2,000	\$2,500
3 issues	\$1,080	\$1,325
1 issue	\$480	\$525
<b>1/2 Page</b>		
6 issues	\$1,000	\$1,500
3 issues	\$540	\$825
1 issue	\$225	\$350
<b>1/4 Page</b>		
6 issues	\$600	\$900
3 issues	\$325	\$525
1 issue	\$150	\$250
<b>1/8 Page</b>		
6 issues	\$300	\$500
3 issues	\$175	\$325
1 issue	\$75	\$185
<b>Professional Ad (Business Card)</b>		
6 issues	\$90	\$180

**Get Your Maps copied at the KGS library  
We can scan, copy, and print up to 44" wide**

**Color or Black & White**

**Solid Color @ \$4.00/sq. ft.**

**Line maps with color @ \$3.00/sq. ft.**

## **Robert F. Walters Digital Library**

**Log in as our Guest**

**username: guest**

**password: guest**

**316-265-8676**



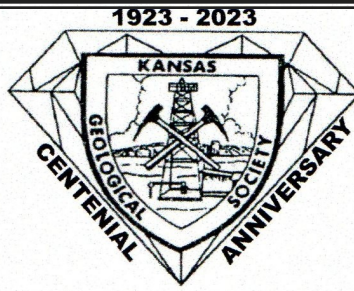
**Let Us Print Your Geo Reports  
And Save Your Time For Finding More Oil & Gas**

**Top Quality Color Printing For Our Membership**

**Email your files to: [kgsorders@gmail.com](mailto:kgsorders@gmail.com)**

**The Kansas Geological Society & Library**





# **KGF - KGS**

# **MIXER**

**MAY 25TH 4 TO 8 PM**

**CENTRAL STANDARD BREWING**

**156 GREENWOOD**

**WICHITA, KS 67211**

**(1 BLOCK SOUTH OF DOUGLAS  
1 BLOCK WEST OF HYDRAULIC)**

**FREE FOOD TRUCKS**

**FIRST BEER FREE**

**KGF DONATIONS ACCEPTED!!**

**COME HAVE SOME FUN!!!**

**May 10th, 2023**

Dear Members and Friends of the Kansas Geological Foundation & Kansas Geological Society,

You and your spouse, friends, colleagues, and / or employees are invited to attend the **TWENTY-SIXTH Annual Kansas Geological Foundation & Kansas Geological Society Spring Mixer**.

The **KGF Mixer** will be held on **Thursday, May 25<sup>th</sup>, 2023, at Central Standard Brewing (aka CSB) @ 156 Greenwood, Wichita, KS. 67211: across the street (East) from Hyde Park.**

**CSB is locally owned; with excellent craft beer, sangria, kombucha; and food trucks; we have Big B's Beef Truck scheduled for Thursday, May 25<sup>th</sup>, from 4:00 pm to ~8:00 pm**; for great sandwiches, gyros, snacks/appetizers, and soft drinks. We plan to provide a drink ticket for **CSB** & a meal ticket for Big B's Beef Truck; so please come and try them both; I can guarantee they are both good!

As always, membership in the Kansas Geological Foundation or the Kansas Geological Society is **NOT** required to attend; but, some of you will join the Foundation before you leave the event. Anyone even remotely interested in geology (or geologists) is welcome to **attend for FREE**, and **anyone is invited to join the Kansas Geological Foundation** for a minimum \$50/year contribution, which is a tax deductible donation to a non-profit/charitable/educational organization.

We of course are asking for **DONATIONS** to subsidize this event to offset the cost of food/beer, and services; as the Board of Directors is always under the impression that this event should be at least self-supporting. In addition to sponsoring the Mixer, your donation assists the **Foundation** in continuing to sponsor its current endeavors which include **both educational, and data preservation efforts**.

I really hate to try to get into your pocket during these tough economic times in the petroleum industry, but to defray the costs of the Mixer, please consider a **donation, (even just \$10 or \$20, as every little bit helps)**. Donations to offset the cost of the Mixer can be sent to the Kansas Geological Foundation (KGF) 1704 S. Baehr St, Wichita, KS 67209; or you may make a donation at the Mixer. As always, contributors to this event will be recognized at the Mixer, unless otherwise instructed.

Please contact the KGF/KGS&L at 265-8676 with any additional questions you might have.

Or if you are not easily offended, you are welcome to contact me directly at 316-833-2722.

THANK YOU!

Respectfully,

Roger L. Martin, KGF Annual Spring Mixer Chairman-for-Life

Committee members: Tim Hellman, Preston Doll, Debra FitzGerald, Doug Davis, Beth Isern

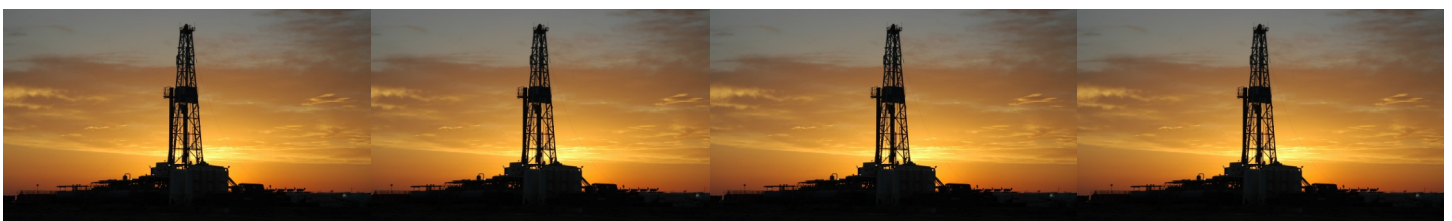
# An Open Invitation to Young Geologists to Join AAPG

I would like to extend a special invitation to recent graduates and other young geological professionals to join AAPG. There are many young geologists outside the Wichita area that I have never met. They may work out of Great Bend or Hays, Kansas working with smaller oil and gas producers or working on their own as well site geologists. Kansas does have a future for the foreseeable future. The time is now to meet others from larger regional companies to forge a relationship for future employment. Young minds will be needed to replace those retiring and that other bad option.

I joined AAPG late in my career, much to my regret. I now serve voluntarily as a delegate for the Mid-Continent Section representing the Kansas Geological Society.

Respectfully yours,

Wesley D. Hansen Bulletin Editor and AAPG Delegate



## *In Memoriam*

### **KGS and Industry Members Lost in 2022 and 2023**

**2022**

**Lee Poulsen**

**Bill Ham**

**Pat Kane**

**William “Bill” Shepherd**

**Tony Kolodziej**

**Larry Skelton**

**Alfred “Fred” James**

**Jon T. Williams**

**Phil Knighton**

**2023**

**Bill C. Romig**

---

#### **Attention:**

**The KGF has several empty completion card cabinets for sale.**

**The price is \$50/cabinet with buyer responsible for pick up.**

**Also, many empty file cabinets and desks etc. are available as well.**

**Please contact Ted Jochems**

**At the KGS at 316-265-8676**



# PROFESSIONAL DIRECTORY

## Kirk Rundle

### Consulting Geophysicist

3D Seismic Design, Acquisition to Processing QC.,  
Interpretation and Analysis, Subsurface Integration  
7340 W. 21st. N., Ste. 100  
Wichita, Kansas 67205

Office: 316-721-1421 Fax: 316-721-1843  
Email: kirk@rundlegeo.com

## ROGER L. MARTIN

### Independent Petroleum Geologist

200 E 1st St, Ste 405, Wichita, KS 67202

Cell: 316-833-2722 Office: 316-250-6970  
KS Field Cell: 316-655-1227

Email: rogermartingeo@yahoo.com

## Covey - The Well Watchers

"One Thousand Wells and Counting"

### Curtis E. Covey Wellsite Petroleum Geologist

Gas Trailer Cell: 316-217-4679 Office: 316-776-0367

Email: wellsitegeol@gmail.com

6548 Bedford Circle Derby, Kansas 67037

Gas Detection Trailer & Internet/Phone Communications



**GRAVITY OIL**  
LLC

**ELI J. FELTS**  
CONSULTING PETROLEUM GEOLOGIST

316.204.5059 EJJELTS47@GMAIL.COM

- VERTICAL & HORIZONTAL WELL-SITE SUPERVISION
- PROSPECT GENERATION & EVALUATION
- WELL-LOG ANALYSIS
- DIGITAL MAPPING SERVICES & GEOLOGICAL REPORTS
- KCC & COMPLIANCE SPECIALIST
- PROFESSIONALLY INSURED

COMPETITIVE PRICING & STATE OF THE ART SERVICES YOU CAN COUNT ON  
CALL TODAY & RECEIVE (1) FREE DAY WELL-SITE TO NEW CLIENTS

Your business card ad

Could be right here

For only \$90/year

## M. ((Brad))ford Rine, Geologist

Licensed, Registered, Certified

PROSPECT EVALUATION	PROSPECT ORIENTATION
WELLSITE SUPERVISION	DRLG/COMPL CONSULTATION
RESERVOIR STUDIES	PROPERTY EVALUATION
EXPERT TESTIMONY	BANJO PICKER
100 South Main Suite #415 Wichita, Kansas 67202	Email: rinemb@sbcglobal.net Office & Cell: (316) 250-5941

## WESLEY D. HANSEN

### Consulting Geologist

Well site Supervision • Geologic Studies

212 N. Market, Ste 257

Wichita, Kansas 67202

Office/Mobile: ( 316) 772-6188

whansen4651@sbcglobal.net

40 Continuous Years in the Oil Patch

Your business card ad

Could be right here

For only \$90/year



**JOHN H. MORRISON, III**  
President

www.IOGsi.com Phone: 316-263-8281  
3909 N. Sweet Bay St. Fax: 316-263-0874  
Wichita, Kansas 67226-3501 Email: jmorrisson@iogsi.com

## MELLAND ENGINEERING, INC.

Petroleum Engineering & Geological Consulting

**James E. Melland, P.E., P.G.**

President

Office: (620) 241-4621 Fax: (620) 241-2621

jamesm@mellandengineering.com

www.mellandengineering.com

P.O. Box 841, McPherson, KS 67460-0841

Your business card ad

Could be right here

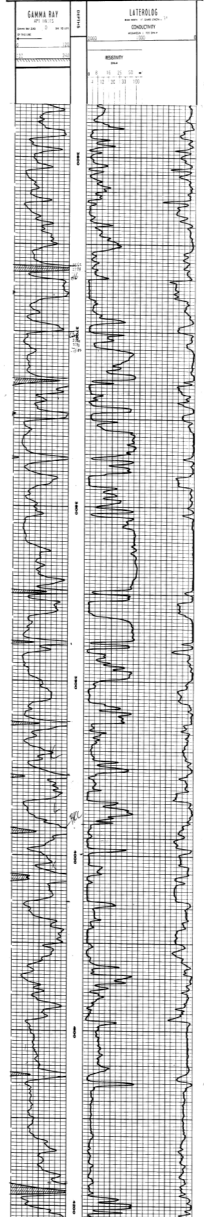
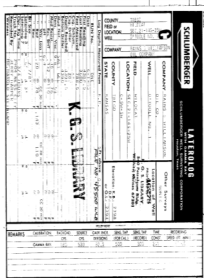
For only \$90/year

Your business card ad

Could be right here

For only \$90/year

*The KGS Library is pleased to  
announce a new service*



Creating  
LAS files  
from our logs  
or yours

**\$20.00 per  
curve!!**

Quick  
turn-around

Send us your log file  
or tell us which of  
ours you would like  
converted.

**316-265-8676**

## **A shout out to Kansas Oil and Gas Industry**

### **Service Companies**

**Oil prices are recovering nicely with WTI about \$90 per barrel and Kansas posted price about \$80 per barrel**

**Now is the time to resume advertising in the KGS Bulletin**

**Let our several hundred members know that your company is still active and ready to work.**

**Your half page ad would look great here.**

**Color or black and white**

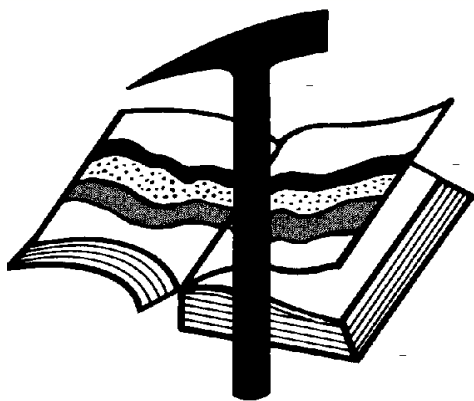
**Contact Kent Scribner at 316-640-1154**

### **KGS members please check your files**

Fellow KGS members, please remember to check your files of elogs and geologist reports against the KGS paper library and the WDL before discarding them. I was contacted by John Morrison recently about a well I watched years ago that had some tops and DST info missing from his completion card. I took pics from my geo report of tops and DST results and sent them to John to update his card data. If I was to go through all of my files, I'm sure I have many logs and geo reports that are not in the files of either the KGS paper or the WDL. Before I hang things up in my career, I vow to go through all of my data and get it donated and scanned.

KCC rules allow an operator to hold information confidential for a two year period. As long as the well in question is older than the two year period, one can release the data. If one has concerns about alienating a client, of course, feel free to ask for permission.

Wes Hansen



# Kansas Geological Foundation

Web Site: [www.kgfoundation.org](http://www.kgfoundation.org)

**212 North Market  
Wichita, Kansas 67202**

A not-for-profit educational and scientific corporation

## GOALS:

- promote geology and earth science
- preserve geological records
- establish memorials and endowments
- support field trips and seminars
- financial aid and grants to students

**PLEASE HELP SUPPORT THE FOUNDATION**

## Kansas Geological Foundation Services

The Kansas Geological Foundation provides the following services as a part of the organization's commitment to educate the public regarding earth science.

### Speaker's Bureau

A list of speakers available to talk about various aspects of geology may be obtained by contacting Wes Hansen at the KGS Library, 265-8676. This service is free to the public.

### DVD/Videotape Library

The KGF maintains a DVD & videotape library focused primarily on the various fields of earth science. These tapes may be checked out without charge by the public. To obtain a list of tapes, please contact the KGS Library, 1704 S, Baehr Wichita, KS 67209 or call Wes Hansen at 265-8676.

The Kansas Geological Foundation was founded in March, 1989 as a not-for-profit corporation under the guidelines of section 501(c)(3) of the tax code to provide individuals and corporations the opportunity to further the science of geology. It is dedicated to providing charitable, scientific, literary and educational opportunities in the field of geology for the professional geologist as well as the general public.

KGF can receive in-kind donations through which the donor may receive a tax deduction. Of equal importance, the KGF provides the financial resources to sort, process and file this data at the KGS library. If you have a donation to make, please contact the KGF at 265-8676.

Your tax-deductible membership donation helps to defray the cost of processing donations and to support public education programs about the science of geology. Annual membership begins at \$50.00 per year. Donations of \$100.00 or more are encouraged through the following clubs:

<b>Century Club</b>	\$ 100 to \$ 499
<b>\$500 Club</b>	\$ 500 to \$ 999
<b>Millennium Club</b>	\$1000 to \$5000
<b>President's Club</b>	\$5000 and over



# ***Kansas Geological Foundation***

## ***Kansas Geological Foundation News***

### **Fall 2022 and Spring 2023 KGF Scholarship Recipients**

#### **Fall 2022 KGF Scholarships Awarded**

<b>Name</b>	<b>University</b>	<b>Scholarship</b>	<b>Amount</b>
Isabela Lupini	Kansas State University	KGF (Bob Cowdery Scholarship)	\$1500.00
Nicholas Ferry	University of Kansas	KGF Scholarship	\$1000.00
Makenna Harris	University of Kansas	KGF Scholarship	\$1000.00
Sarah Lamm	University if Kansas	KGF Scholarship	\$1000.00

#### **Spring 2023 KGF Scholarships Awarded**

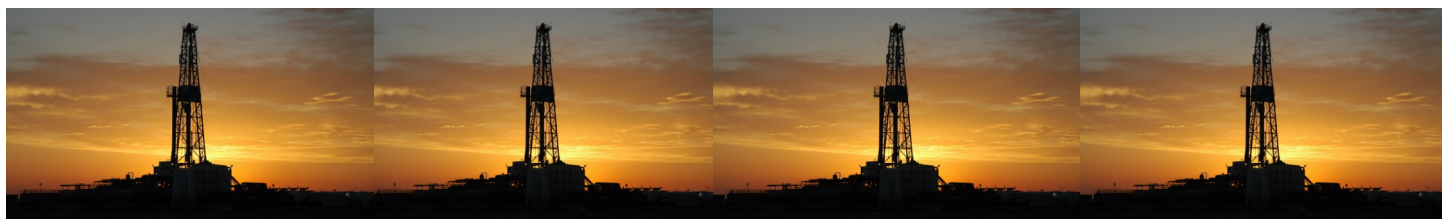
<b>Name</b>	<b>University</b>	<b>Scholarship</b>	<b>Amount</b>
Madeline Akers	Kansas State University	KGF (Knighton Family Scholarship)	\$1500.00
Marc Center	University of Kansas	KGF Scholarship	\$1000.00
Nicholas Ferry	University of Kansas	KGF Scholarship	\$1000.00
Hannah Proffitt	University of Kansas	KGF Scholarship	\$1000.00

#### **KGF Grants**

**Sarah Lamm, PhD candidate at KU**

**\$2000.00 for Rocks and Rockets Event in Colby**

**August 2023**



# ***Kansas Geological Foundation News***

Students: The KGF awards scholarships each December and May. Check with your department chairs for applications. You must submit complete applications by the deadline.

**Scholarship Applications for the Fall semester will be due by May 1, 2023.**

Grants to help with research on Kansas related geology are also considered for aid.

If you are in the KGS Library and see Ted Jochems or any of the integrators, give any of them a great big thanks for their efforts in continuing the tedious process of examining, scanning and integrating new logs and geologist's reports etc. into our library and the WDL.

---

## **KGF Officers and Board Members**

**Executive Director**      **Kerry Parham**  
**President -**              **Tim Hellman**  
**Vice President -**      **Rusty Mourning**  
**Treasurer -**            **Jacob Dyson**  
**Secretary -**            **Debra D. FitzGerald**

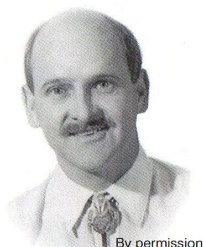
### **Board Members**

**Brad Rine (24)**              **Dennis Hedke (24)**  
**Nick Hixon (25)**          **Beth Isern (25)**

---

**Scholarships - Maurice Korphage**  
**Publicity - Wes Hansen**

## **The Kansas Geological Foundation Needs You!**



The KGF provides the financial resources to sort, process and file, in-kind donations of geological data at the KGS library. Due in large part to the KGF this unique and rare well of information is being made available to all. Please consider telling your company management and colleagues about the benefits of a library that continues expanding in part because of the KGF.

**We very much value and need your financial support.**

**PLEASE SUPPORT THE INTEGRATION PROJECT BY DONATING FINANCIALLY TO THE KANSAS GEOLOGICAL FOUNDATION**

# Thank you to the Current KGF Members

The Kansas Geological Foundation gratefully acknowledges the generous contributions from the following Individual and Corporate Donors during our year end 2021 fundraising. From the Basic Membership up through the Millennium Class Members, we are deeply appreciative of your generosity in one of the most challenging times in our history. We wish you every success in the years and decades ahead.

## **Millennium Club**

Michel Runnion      William H. Shepherd      Steve Frankamp      Richard Jordan - Vincent Oil

Mark Newman – Crosspoint      Richard Hiebsch - Vincent Oil

## **500 Club**

Don Beauchamp      Dave Callewaert      David Doyel      John O. Farmer, Inc.

Debra Fitzgerald      Abercrombie Energy, LLC      Gore Oil Company      Derry Larson

Roger McCoy      Herman L. Loeb LLC      Bob O'Dell      Northern Lights Oil Company

Shakespeare Oil Company, Inc      Berexco, LLC

## **Century Club**

C.W. Todd Aikins III      Val Energy, Inc.      W. Bryce Bidleman      William E. Chew

Scott Corsair      Marshall Crouch III      Jene C. Darmstetter      Kenneth M. Dean Tom Dudgeon

Larry Friend      Hedke Geoscience Consulting, LLC      Wesley Hansen      George R. Jones

Kenneth M. LeBlanc      Messenger Petroleum      Terra Firma Exploration      Bill Petersen

Sunrise Oilfield Supply, LLC      M. Brad Rine      Richard J. Saenger      Mark Shreve

Trilobite Testing, Inc.      Mark Thompson      Darrel Walters      Alfred James III      Chellie Mazzullo

## **Basic Membership**

Phil Askey      Corey Baker      Briscoe Petroleum LLC      Raul Brito      Holly Burke      Mike Bryan

Martin Dubois      Harvey Gough      Tim Hellman      F. Judson Hipps      Jerry Honas

Mike Kidwell      John C. Kinard      M.L. Korphage      William C. Manthey III      Mikeal Maune

Rusty Mourning      Quincy Ridge Petroleum, Inc.      Troy Phillips      John Rose      Stewart Producers, Inc.

Marc Summervill      Tomco Oil, Inc.      Larson Engineering, Inc.      Ted Jochems

Sal Mazzullo      JRZ Enterprises      John Washburn

# Kansas Geological Foundation Memorials

KGS Member	Date Deceased	Memorial Established
Dan Bowles	09/89	1990
John Brewer	10/89	1990
George Bruce	08/89	1990
Robert Gebhart	01/90	1990
Ray Anderson, Jr.	11/90	1990
Harold McNeil	03/91	1991
Millard W. Smith	08/91	1991
Clinton Engstrand	09/91	1991
M.F. "Ted" Bear	10/91	1991
James & Kathryn Gould	11/91	1991
E. Gail Carpenter	06/91	1993
Benton Brooks	09/92	1992
Robert C. Armstrong	01/93	1993
Nancy Lorenz	02/93	1993
Norman R. Stewart	07/93	1993
Robert W. Watchous	12/93	1993
J. George Klein	07/94	1994
Harold C.J. Terhune	01/95	1995
Carl Todd	01/95	1995
Don R. Pate	03/95	1995
R. James Gear	05/95	1995
Vernon Hess	06/95	1995
E. K. Edmiston	06/95	1995
Jack Rine	07/95	1995
Lee Cornell	08/95	1995
John Graves	10/95	1995
Wilson Rains	10/95	1995
Heber Beardmore, Jr.	09/96	1996
Elmer "Lucky" Opfer	12/96	1996
Raymond M. Goodin	01/97	1997
Donald F. Moore	10/92	1997
Gerald J. Kathol	03/97	1997
James D. Davies	08/88	1997
R. Kenneth Smith	04/97	1997
Robert L. Dilts	05/97	1997
Delmer L. Powers	06/72	1997
Gene Falkowski	11/97	1997
Arthur (Bill) Jacques	01/98	1998
Bus Woods	01/98	1998
Frank M. Brooks	03/98	1998
Robert F. Walters	04/98	1998
Stephen Powell	04/98	1998
Deane Jirrels	05/98	1998
William G. Iversen	07/98	1998
Ann E. Watchous	08/98	1998
W.R. "Bill" Murfin	09/98	1998
Donald L. Hellar	11/98	1998
Joseph E. Rakaskas	01/99	1999
Charles W. Steincamp	02/99	1999
Robert and Betty Glover	10/96	1998
Howard E. Schwerdtfeger	11/98	1999
W. W. "Brick" Wakefield	03/99	1999
V. Richard Hoover	01/00	2000
Warren E. Tomlinson	01/00	2000
James A. Morris	01/00	2000
Eric H. Jager	03/00	2000
Kenneth W. Johnson	03/00	2000

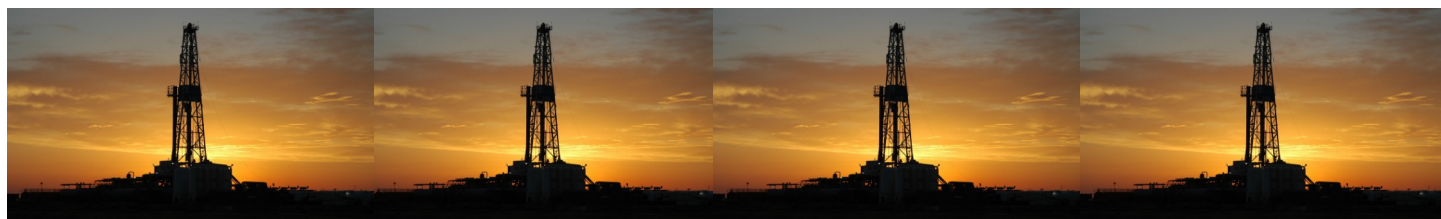


# Kansas Geological Foundation Memorials

KGS Member	Date Deceased	Memorial Established
Dean C. Schaaake	03/00	2000
Fred S. Lillibridge	05/00	2000
Jerry A. Langrehr	07/00	2000
Clark A. Roach	07/00	2000
Floyd W. "Bud" Mallonee	10/00	2000
Ralph W. Ruuwe	09/00	2000
Robert L. Slamal	02/01	2001
Jerold E. Jespersen	06/01	2001
William A. Sladek	06/01	2001
Harlan B. Dixon	06/01	2001
Edward B. Donnelly	08/01	2001
Richard P. Nixon	02/02	2002
Robert W. Frensley	12/01	2002
Gerald W. Zorger	01/02	2002
Don L. Calvin	03/02	2002
Claud Sheats	02/02	2002
Merle Britting	2002	2002
Harold Trapp	11/02	2002
Donald M. Brown	11/02	2003
Elwyn Nagel	03/03	2003
Robert Noll	09/03	2003
Benny Singleton	09/03	2003
Jay Dirks	2003	2003
J. Mark Richardson	02/04	2004
John "Jack" Barwick	02/01	2004
Richard Roby	03/04	2004
Ruth Bell Steinberg	2004	2004
Gordon Keen	03/04	2004
Lloyd Tarrant	05/04	2004
Robert J. "Rob" Dietterich	08/96	2004
Mervyn Mace	12/04	2004
Donald Hoy Smith	04/05	2005
Richard M. Foley	06/05	2005
Wayne Brinegar	06/05	2005
Charles B. Moore	09/96	2005
Jack Heathman	05/06	2006
Charles Kaiser	09/06	2006
Rod Sweetman	08/06	2006
Karl Becker	10/06	2006
Frank Hamlin	10/06	2006
Marvin Douglas	12/06	2006
Robert W. Hammond	04/07	2007
Eldon Frazey	04/07	2007
Pete Amstutz	05/07	2007
Charles Spradlin	05/07	2007
Donald R. "Bob" Douglass	09/07	2007
Vincent Hiebsch	11/07	2007
Glen C. Thrasher	03/08	2008
Peg Walters	06/08	2008
Theodore "Ted" Sandberg	07/08	2008
James Ralstin	11/08	2008
Earl Brandt	04/09	2009
Walter DeLozier	05/09	2009
Don D. Strong	1/10	2010
John Stone	02/10	2010
Craig Caulk	03/10	2010
Joseph E. Moreland, Jr.	03/10	2010

# Kansas Geological Foundation Memorials

KGS Member	Date Deceased	Memorial Established
Gene Garmon	03/10	2010
James F. Dilts	05/10	2010
Jerry Pike	05/10	2010
Donald Hollar	06/10	2010
Delbert Costa	08/10	2010
John Tanner	08/10	2010
William (Bill) Owen	09/10	2010
Harold (Hal) Brown	10/10	2010
Edmund G. Lorenz	11/10	2010
Thomas E. Black	05/11	2011
Wayne E. Walcher	07/11	2011
Henry F. Filson	07/11	2011
Thomas Ray	07/11	2011
Edgar E. Smith	09/11	2012
Marilyn Messinger	06/13	2013
Micheal Mitchell	09/13	2013
Orvie Howell	11/13	2013
James Thompson	11/13	2013
Dick Rowland	09/13	2014
Robbie Thompson	12/13	2014
Kris Kennedy	04/14	2015
Annette Hedke	02/15	2015
James Devlin	04/15	2015
Robert Gensch	09/15	2015
Jerald Rains	05/16	2016
Max Houston	05/16	2016
Robert "Gus" Messinger	01/17	2017
Jimmy Wayne Gowens	04/17	2017
Walter H. Martz Jr.	01/18	2018
Gary Sandlin	01/17	2018
Douglas McGinness	12/16	2018
Allen Siemens	06/18	2018
Ernest R. "Ernie" Morrison	09/18	2018
E. G. "Elbie" McNeil	12/18	2018
Robert Maxwell (Bob) Euwer	1/19	2019
J. Fred Hambright	12/18	2019
W. Lynn Watney	7/19	2019
Byron Hummon	12/18	2019
Mike Raymond	11/19	2019
James Roberts, Jr.	3/19	2019
Herb Johnson	8/19	2020
Lloyd Parrish	2/20	2020
Bruce Reed	5/20	2020
Bob Scull	6/20	2020
Thornton E. Anderson	7/20	2020
Don Shawver	12/16	2020
Phillip Hart	12/20	2021
Timothy Lauer	05/21	2021
Fredrick Stump	09/21	2021
Larry J. Richardson	10/21	2021



**18 Drilling Rigs**  
**To depth of 9,500 ft.**



WESTERN KANSAS  
SOUTHERN NEBRASKA  
EASTERN COLORADO  
OKLAHOMA PANHANDLE

For contract information contact:

**William Murfin**  
Drilling Manager

**316-258-8888 (Direct)**  
**316-267-3241 (Main)**

**250 N. Water, Ste. 300**  
**Wichita, KS 67202**

**DUKE**  
**DRILLING COMPANY**  
**ROTARY DRILLING CONTRACTOR**  
620 Hubbard PO Box 823 Great Bend, KS 67530  
100 S. Main, Ste. 410, Wichita, KS 67202

*Your Company*

*1/8 page ad here*

### **BULLETIN CONTENT POLICY**

Effective January 1, 2018, only ads for service companies and geologists offering their services will be permitted in the KGS Bulletin. Furthermore, only content of geologic interest or official KGS functions (technical talks, annual banquet, golf tourney, picnic etc.) will be permitted in this bulletin. This policy is in keeping with maintaining a professional standard for this publication. Any interpretation of this policy rests solely with the editor of this bulletin.



### **AAPG Needs You!**

#### **Professional geoscientists, share your world!**

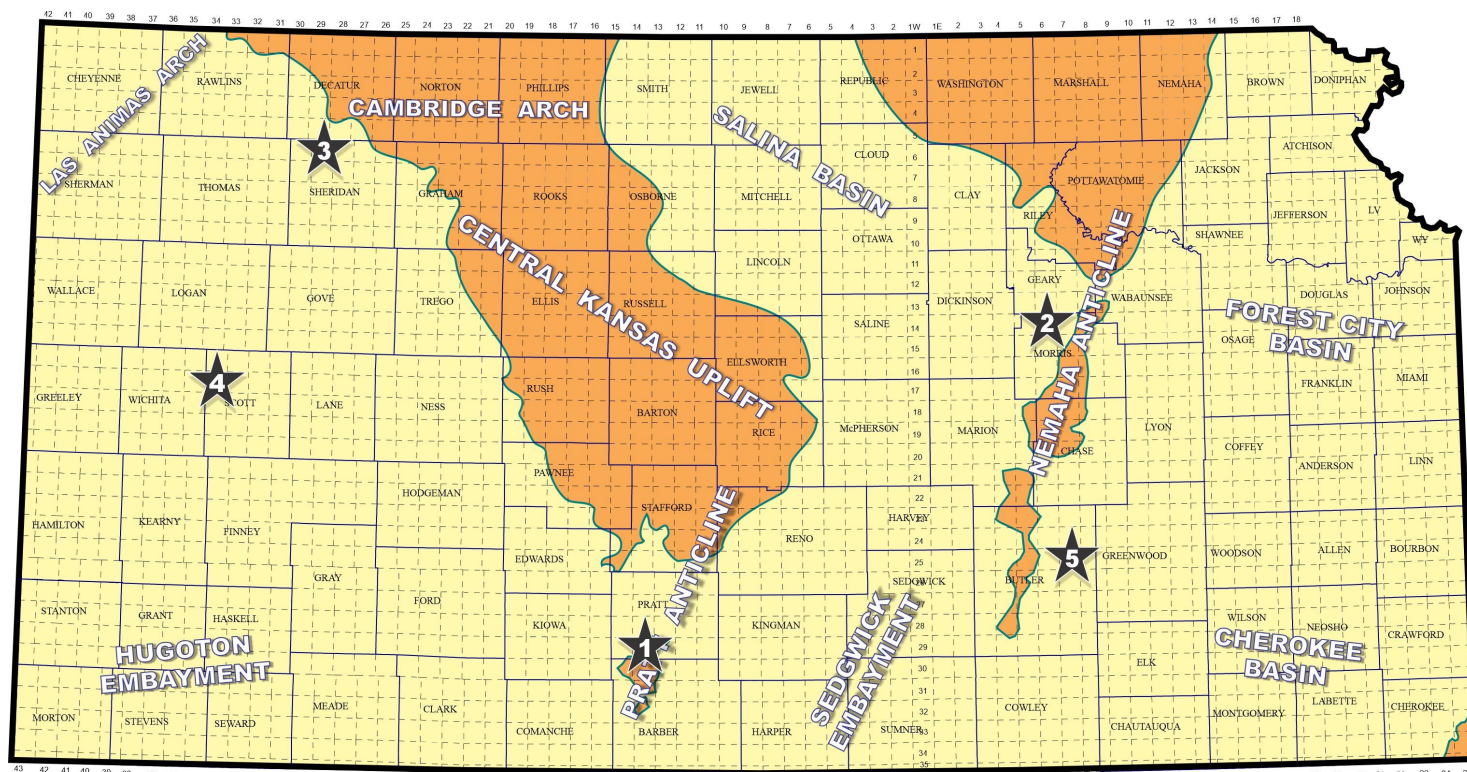
The Mid Continent Section has **17 AAPG Student**

**Chapters**, but only **3 Visiting Geoscientists**...which makes it almost impossible to have a professional geoscientist visit to each school at least once a year or even once every two years. The aim of AAPG's program is to give students a flavor of a professional life in energy resources. It also hopes to encourage dialog between industry and academia.

To be a Visiting Geoscientist bearing the AAPG flag, you are asked to have at least 5 years of experience and make at least one visit per year to a university. It can be a school with an AAPG Student Chapter, or a college/university without one. Your choice.

The Mid Continent schools with Student Chapters are: Missouri University, Fort Hays State University, Iowa State University, Kansas State University, Missouri State University, University of Nebraska, Northwest Missouri State University, Oklahoma State University, University of Oklahoma, University of Arkansas, University of Iowa, University of Kansas, University of Missouri, Columbia University of Tulsa and Wichita State University.

Contact Robbie Gries, co-Chair VGP committee, Denver, if you are interested in learning more. [rrgries@aol.com](mailto:rrgries@aol.com)



Map courtesy of Marc Summerville

**1. Shelby Resources LLC**, Denver (CO), has established a new unnamed oil field in Pratt County, about seven miles south and one mile east of the town of Cullison, Kansas. The #1-17 E-K Unit, approximately NW SE NW in section 17- T29s- R14W, is producing an undisclosed amount of oil from the Lansing-Kansas City formations. Total depth was reached at 4,800 ft. First production was established in March. Completion information remains confidential. Well is located over one mile east of recognized LKC and Simpson Sand oil production in the Stelzer Southwest pool, which was discovered by Wichita-based Lotus Operating Company LLC in 2008. The Stelzer Southwest pool has produced nearly 163,000 BO to date from three wells. (Ref: API 15-151-22562)

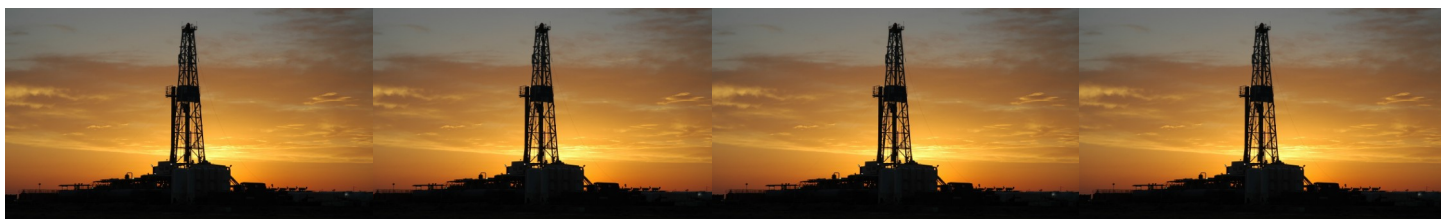
**2. High Plains Resources, LLC**, Denver (CO), has a new Simpson Sand gas discovery in Morris County with the completion of the #23-21 Stenstrom in approximately SW SW SE of section 21- T14s- R6E. The remote discovery lies nearly six miles northeast of abandoned Mississippian oil production in the Latimer field and is about one and one-half miles northwest of White City, Kansas. This is the first Simpson production in Morris County. The well was drilled to a total depth of 4,178 ft. Well completion details are confidential. The field is named "Stenstrom". (ref: API 15-127-20605)



**3. Murfin Drilling Company, Inc**, Wichita (KS), has established the new “Ashley” oil field in Sheridan County with the completion of the #1-2 Ashley A, approximately NE NW SW in section 2- T6s- R29W. The wildcat well was drilled to a total depth of 4,200 ft with company tools. New oil reserves are being recovered from the Lansing - Kansas City LKC) formation. Completion details are being held confidential currently. The new strike lies two and one-half miles northeast of recognized LKC production in the Wessel North field, which has produced nearly 300,000 BO from five wells since 1953. Murfin’s new discovery is located about one mile north and two miles east of Selden, Kansas. (ref: API 15-179-21491)

**4. Landmark Resources, Inc**, Houston (TX), has discovered Marmaton oil deposits at the #1-5 Wright, approximately NE SW NE in section 5- T18s- R34W, in Scott County. Landmark drilled the wildcat well nearly three-quarters mile southwest of another Marmaton discovery in 2011 by New Gulf Operating’s #1 Dale, SW/4 of section 33- T17s- R34W. It established the Isbel Southwest pool and was completed for 46 BOPD with pay coming from 4520-4528 ft. Landmark’s #1-5 Wright was drilled to a total depth of 5,025 ft by Murfin Drilling tools. The well was placed on pump on February 9, 2023. Completion details are confidential. The new “Beaver Lodge Southeast)” field lies about two miles north and one-half mile west of the town of Modoc, Kansas. (Ref: API 15-171-21303)

**5. Satchell Creek Petroleum, LLC**, Wichita (KS), has discovered Cherokee (Squirrel Sand) and Mississippian oil reserves at the #A-1 Liggett, located in approximately the SE NW SE of section 34- T25s- R7E, in Butler County. The 3,261 ft deep wildcat pool discovery well was drilled by Feature Drilling Rig #4 at site about one mile north and east of Rosalia, Kansas. Completion details are confidential currently. Closest recognized production lies over two and one-half miles to the south in the Long Northeast pool, which has produced nearly 28,000 BO from the Mississippian formation since 1953. Satchell’s new oil field has been named “Place Southwest”. (ref: API 15-015-24174)



## May 2023

Sun	Mon	Tue	Wed	Thu	Fri	Sat
	1	2	3	4	5	6
7	8	9 KGS Board	10 Tech Meeting	11	12	13
14	15	16	17 KGF Board	18	19	20
21	22	23	24 Tech Meeting	25 KGF/KGS Mixer	26	27
28	29	30	31			

## June 2023

Sun	Mon	Tue	Wed	Thu	Fri	Sat
				1	2	3
4	5	6	7	8	9	10
11	12	13 KGS Board	14 Tech Meeting	15	16	17
18	19	20	21 KGF Board	22	23	24
25	26	27	28	29	30	